

# Impact Report

Jan - Sept 2022

MWW



# How FareShare works

**We turn an environmental problem into a social solution.**

Our tried and tested processes make it as easy as possible for you to divert your surplus to us for social good.



# Agenda

- 1 Partnership's impact: Jan - Sept 2022
- 2 Who your food helps
- 3 Cost of Living Crisis
- 4 What's next?



The background of the slide features a close-up photograph of several watermelons with dark green and light green striped patterns. Overlaid on this image are large, solid green geometric shapes: a semi-circle in the top right and a larger, irregular shape at the bottom that frames the text.

# Partnership's impact Jan - Sept 2022

## Your total impact:



430

Tonnes  
of food



3,976

Charities  
helped



1,025,972

Equivalent  
meals\*



646

Tonnes of  
CO<sub>2</sub>e saved

\*The equivalent meals calculation is based on WRAP's guidance around reporting the amounts of surplus food redistributed - find more information here: <https://wrap.org.uk/resources/guide/reporting-amounts-food-surplus-redistributed-weight-and-meal-equivalents-wrap>

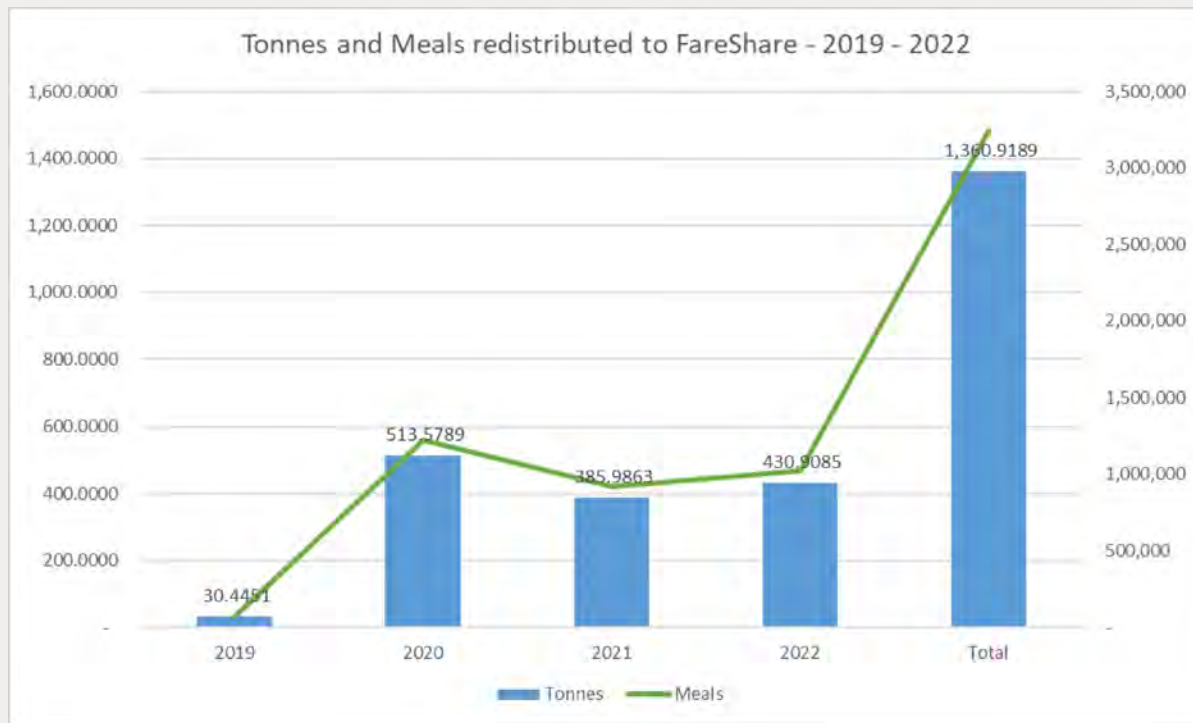




# Your surplus volumes

May 2019 - Sept 2022

## Tonnes and Meals Redistributed Through FareShare



## Redistribution Milestones



### Current milestone

**3,201,875** Equivalent meals redistributed

### To reach your next milestone



**335**

Tonnes of food



**798K**

Equivalent meals



### Next milestone

**4M**

Equivalent meals

# Your environmental impact

Diverting your surplus food to frontline charities and community groups helps you to achieve your business' commitments to reducing food waste.

Based on the surplus food you supplied to FareShare in the last three months, your environmental savings are:

**430 = 646 + 689m**  
**tonnes tonnes litres**



Surplus food  
redistributed



Embedded CO2e  
from going to waste\*

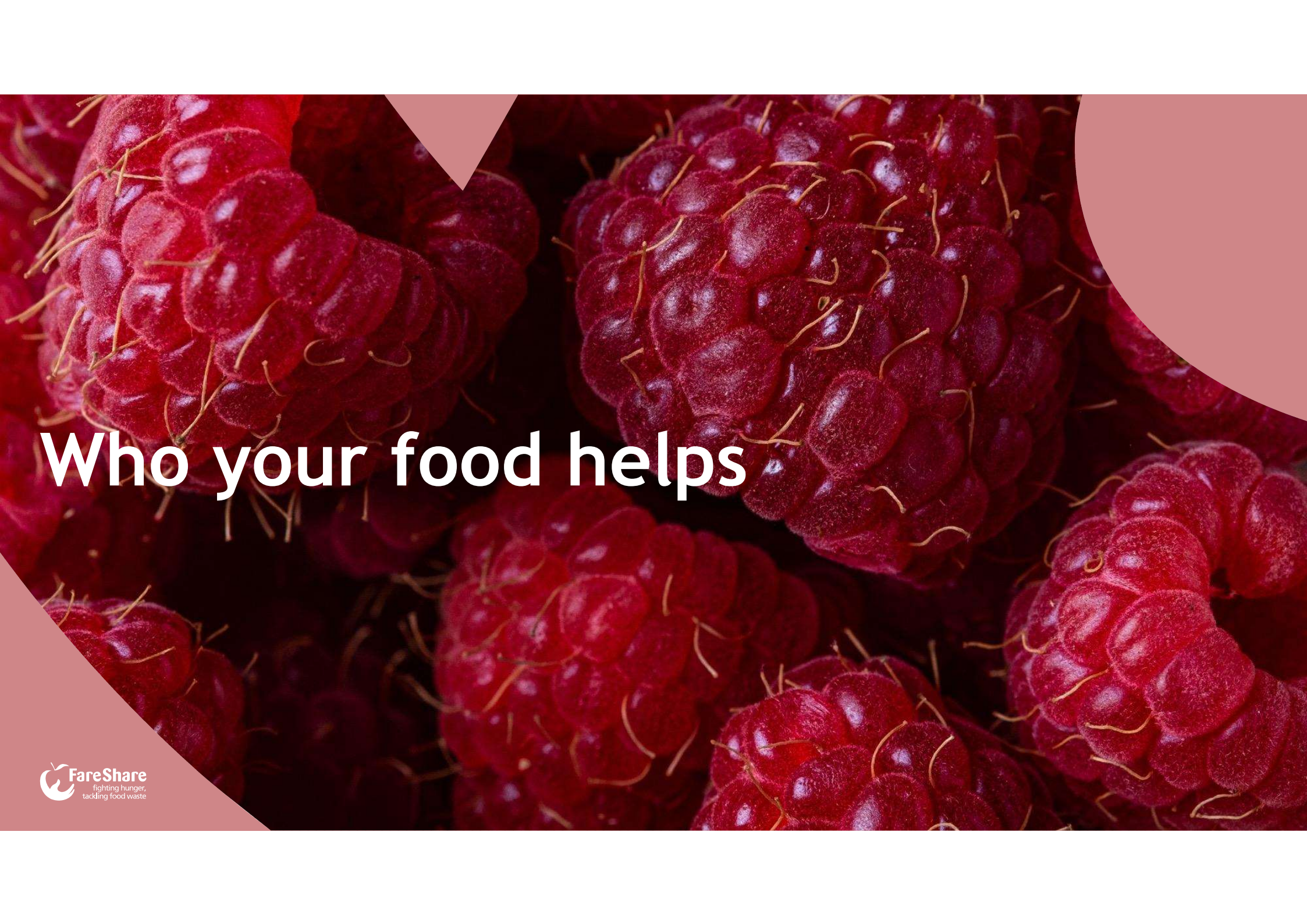


Embedded water  
from going to waste

\*The CO2 and water factors used are based on an average of all surplus food types received into FareShare UK warehouses. Your own specific embedded carbon and water calculation could be significantly higher or lower than this average figure, depending on the type of surplus product you redistribute through FareShare. We would encourage you to seek professional advice to calculate your bespoke embedded emissions.







# Who your food helps



# Who your food has helped

Your food has been received by 3,976 charities and community groups including:



1,104

Working with  
people on low or  
no income



504

Supporting  
children under 18



387

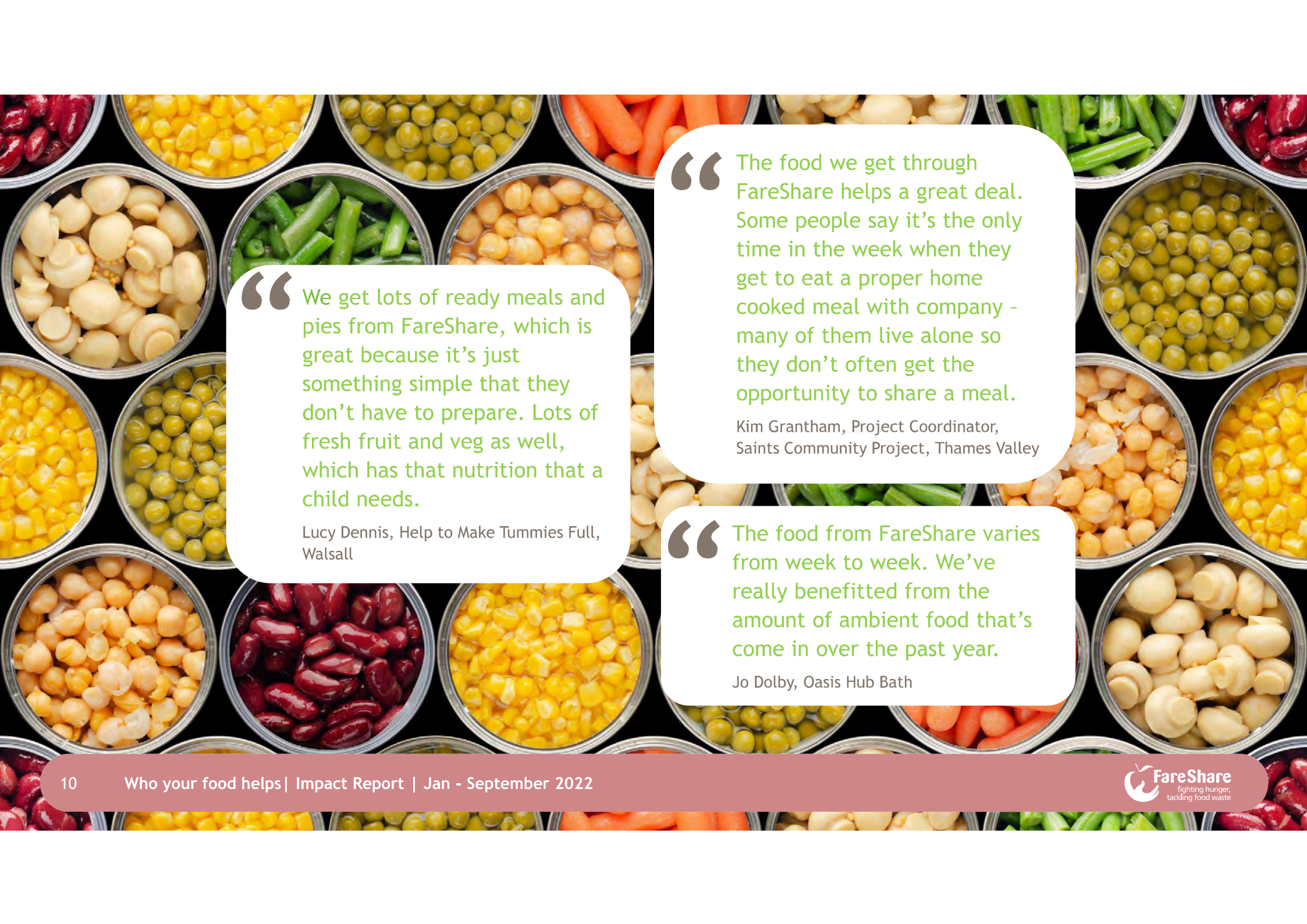
Working with  
families with  
children



304

Homeless or  
rough sleeper  
organisations





“ We get lots of ready meals and pies from FareShare, which is great because it's just something simple that they don't have to prepare. Lots of fresh fruit and veg as well, which has that nutrition that a child needs.

Lucy Dennis, Help to Make Tummies Full, Walsall

“ The food we get through FareShare helps a great deal. Some people say it's the only time in the week when they get to eat a proper home cooked meal with company - many of them live alone so they don't often get the opportunity to share a meal.

Kim Grantham, Project Coordinator, Saints Community Project, Thames Valley

“ The food from FareShare varies from week to week. We've really benefitted from the amount of ambient food that's come in over the past year.

Jo Dolby, Oasis Hub Bath



# Saints Community Project

## Thames Valley

### Overview

- A weekly coffee morning offering refreshments and lunch to over 75 people a week.
- Working with the elderly as well as people with learning disabilities and mental health issues.
- Uses food collected from food partners, including good quality vegetables.
- Often the only time that attendees eat with others.

“The food we get through FareShare helps a great deal. Some people say it’s the only time in the week when they get to eat a proper home cooked meal with company - many of them live alone so they don’t often get the opportunity to share a meal.

Kim Grantham, Project Coordinator





# Cost of Living Crisis



# FareShare's Cost of Living Crisis Campaign

## We urgently need even more help from the food industry

- We're asking people to write to their MP to support our request to government for more funding to unlock more surplus food: [fareshare.org.uk/food-on-plates](https://fareshare.org.uk/food-on-plates)
- We also need support from the food industry. We understand the added pressures on the sector right now and the impact this is having on businesses. But **we simply don't have enough food to meet the skyrocketing demand** and would appreciate any additional support you can give us.

Speak to your FareShare Account Manager about how you can help get even more food to people who need it.



# FareShare's Cost of Living Crisis Campaign



## How surplus food helps one family during cost of living crisis





# Cost of Living Crisis

Millions of people are being forced into food poverty

**This year prices have been rising at their fastest rate for nearly 40 years.**

The UK has seen hikes in food, energy and petrol prices, along with other basics, which are driving the dramatic cost of living crisis.

The Bank of England has warned that inflation could hit 13% later this year.

These rising prices put a higher burden on low-income families, who spend a disproportionate amount on food and energy compared to those with a higher household income\*.

\*<https://www.ons.gov.uk/economy/inflationandpriceindices>



# Thank you

We believe no good food should go to waste.  
Thank you for helping us save food and change lives.

[Fareshare.org.uk/giving-food](https://fareshare.org.uk/giving-food)



For more information contact:  
Account Manager  
[Emma.Brown@fareshare.org.uk](mailto:Emma.Brown@fareshare.org.uk)



Lindsay Boswell, CEO, FareShare

